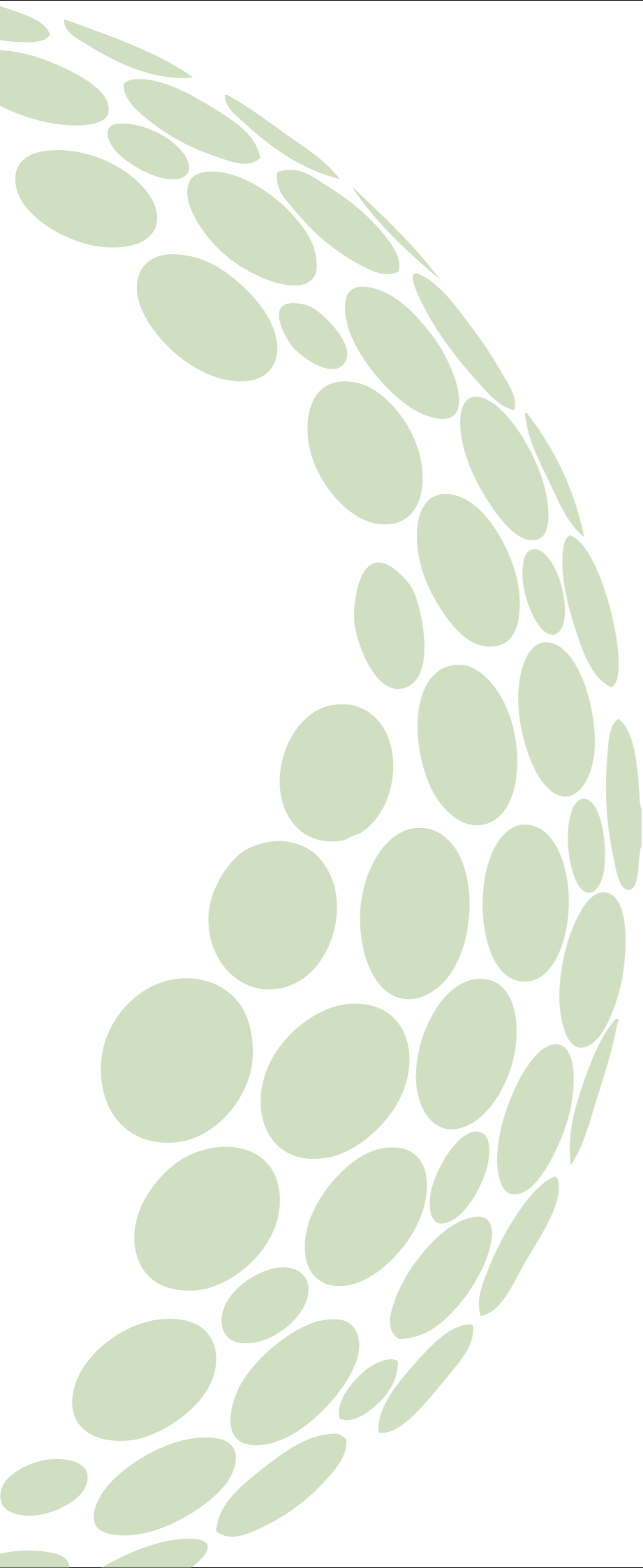
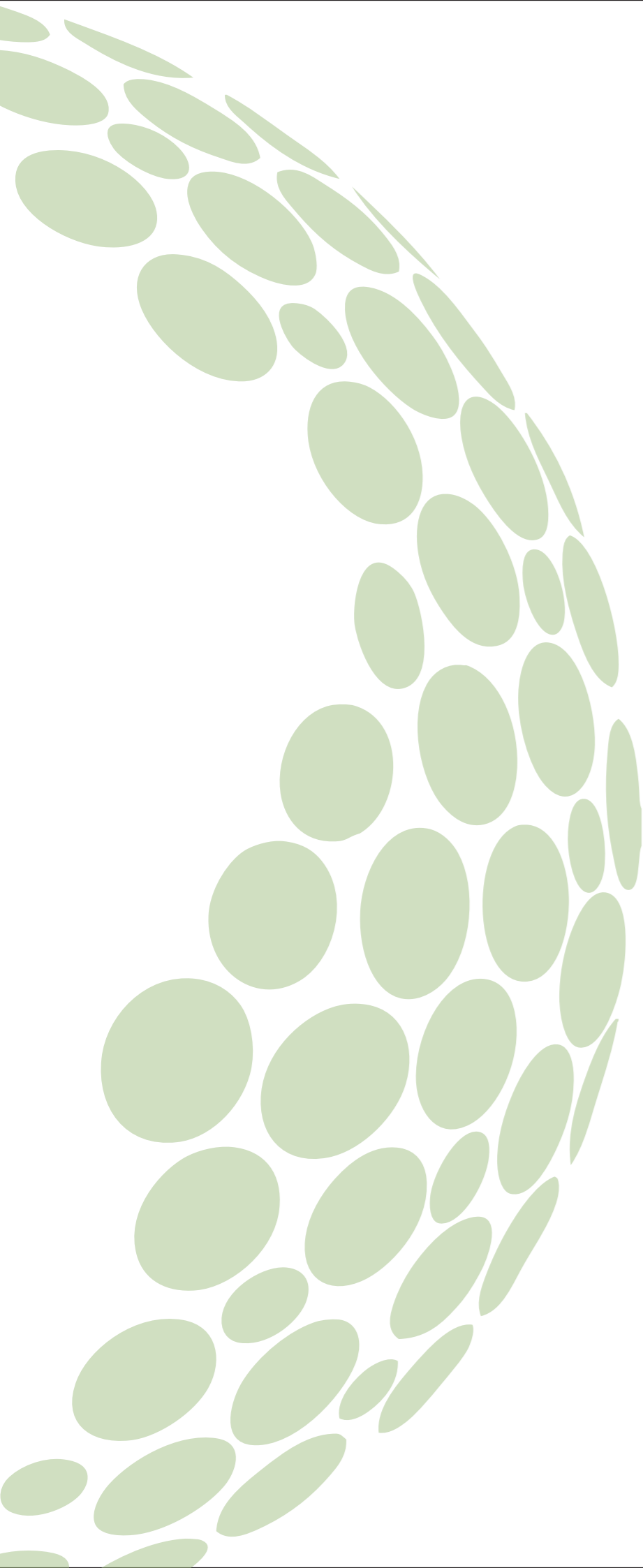


Gadrey | PROPERTIES





GODREJ PROPERTIES' MASTERPIECE IN INDIA



PRESENTING
OUR FLAGSHIP PROJECT
GODREJ GOLF LINKS



THE GOLF TOWNSHIP | EXCLUSIVE PRIVILEGES



Artist's Impression. Not an actual site photograph.



EXCLUSIVE 9 HOLE GOLF COURSE



Artist's impression. Not an actual site photograph.



EXPANSIVE MASTER GOLF COURSE CLUBHOUSE



Artist's impression. Not an actual site photograph.



UNWIND IN STYLE BY THE POOLSIDE



Artist's impression. Not an actual site photograph.



RELAX IN THE INDOOR HEATED POOL IN THE MASTER CLUB



Artist's impression. Not an actual site photograph.



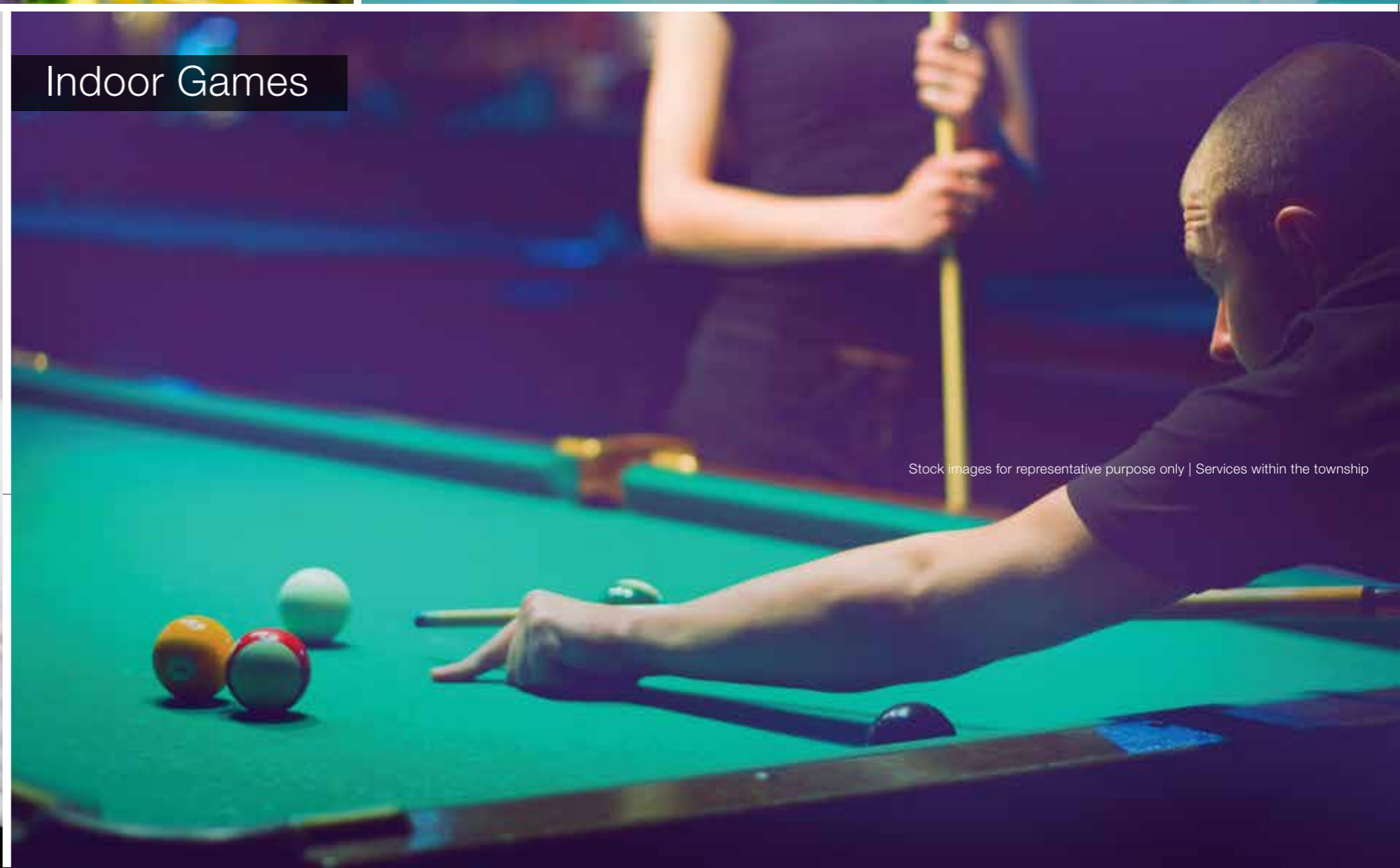
Daily Conveniences



Medical Assistance



24x7 Security



Indoor Games

Stock images for representative purpose only | Services within the township

Artistic impression. Not an actual site photograph.



GODREJ GOLF LINKS
GREATER NOIDA

| EXCLUSIVE BRAND
TIE-UPS



SPA & SALON MANAGED BY **WARREN TRICOMI***

Service in Master Golf Club only



Artist's impression. Not an actual site photograph.

Warren Tricomi Or Equivalent



GYMNASIUM MANAGED BY **HOLYFIELD GYMNASIUM***

Service in Master Golf Club only



Artist's impression. Not an actual site photograph.

Holyfield Gymnasium Or Equivalent



HOSPITALITY BY **SPREE***

Service in Master Golf Club only



Artist's impression. Not an actual site photograph.

Spree Or Equivalent



SPORTS ARENA MANAGED BY **TENVIC SPORTS***

Service in Master Golf Club only



Artist's impression. Not an actual site photograph.

Tenic Sports Or Equivalent



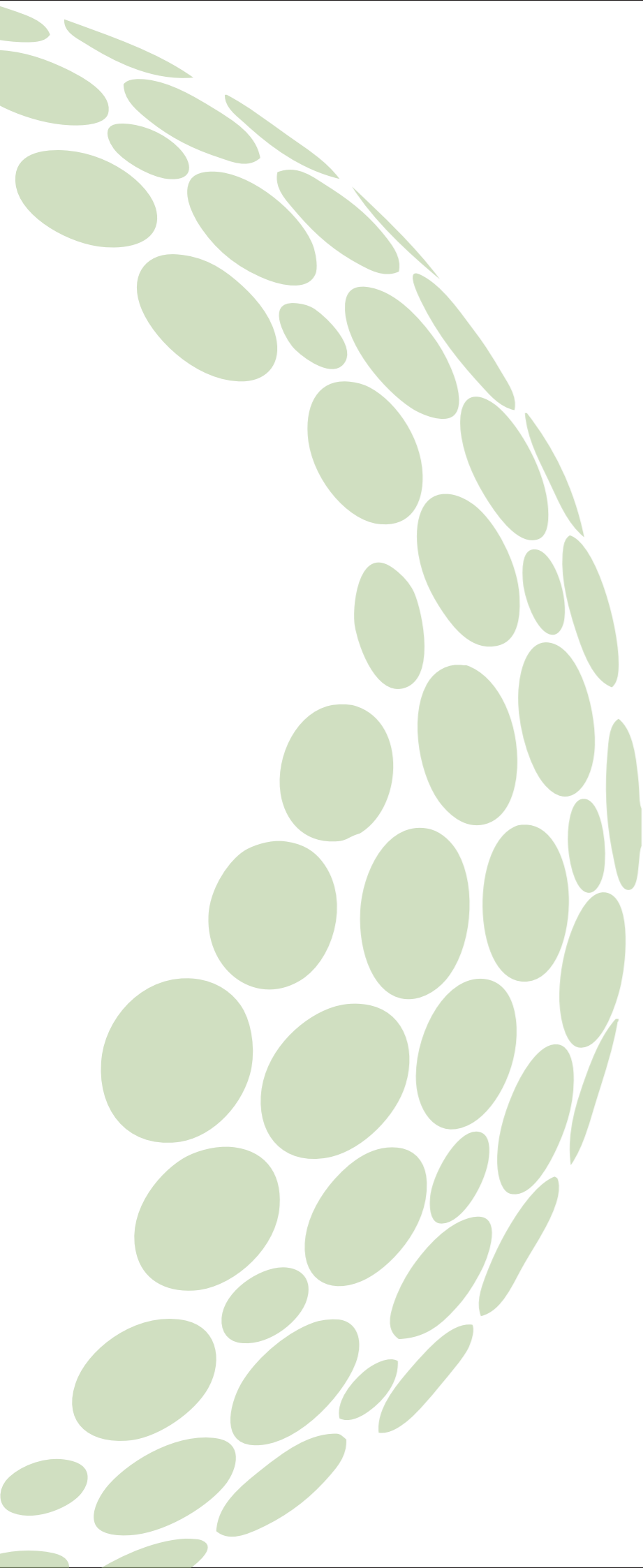
INDIA'S FIRST HIMALYAN RANGE GOLF PRACTICE ACADEMY MANAGED BY **GOLFING NATION***

Service in Master Golf Club only



Artist's impression. Not an actual site photograph.

Golfing Nation Or Equivalent



UNVEILING LIMITED EDITION UBER LUXURY RESIDENCES

GODREJ PARK AVENUE

GREATER NOIDA



114 LIMITED EDITION LOW RISE GOLF-SIDE RESIDENCES



Artist's impression. Not an actual site photograph.



EXCLUSIVE LOW-DENSITY RESIDENCES ENSURING MORE SPACE PER CAPITA



Artist's impression. Not an actual site photograph.



ENJOY LIFE TO THE FULLEST IN THE 3 SIDE OPEN APARTMENTS



Artist's impression. Not an actual site photograph.



LANDSCAPED DECK IN LIVING ROOM



Artist's impression. Not an actual site photograph.



DEDICATED ZONES FOR SKY-HIGH INDULGENCES



Artist's impression. Not an actual site photograph.



SKY GARDENS



Artist's impression. Not an actual site photograph.

BARBEQUE

SEATING PODS

YOGA MEDITATION



STAR GAZING



TERRACE GYM



SEATING LOUNGE



Artist's impression. Not an actual site photograph.



MESMERISING GREEN VIEWS



Artist's impression. Not an actual site photograph.



EXCLUSIVE GOLF COURSE VIEWS FROM SKY GARDENS





SPECTACULAR VIEWS OF SWIMMING POOL



Artist's impression. Not an actual site photograph.



HOMES BUILT WITH CUTTING EDGE TECHNOLOGY OF PRE-CAST CONSTRUCTION



Artist's impression. Not an actual site photograph.



GODREJ PARK AVENUE
GREATER NOIDA

EXCLUSIVE AMENITIES



CONCIERGE SERVICES



Artist's impression. Not an actual site photograph.



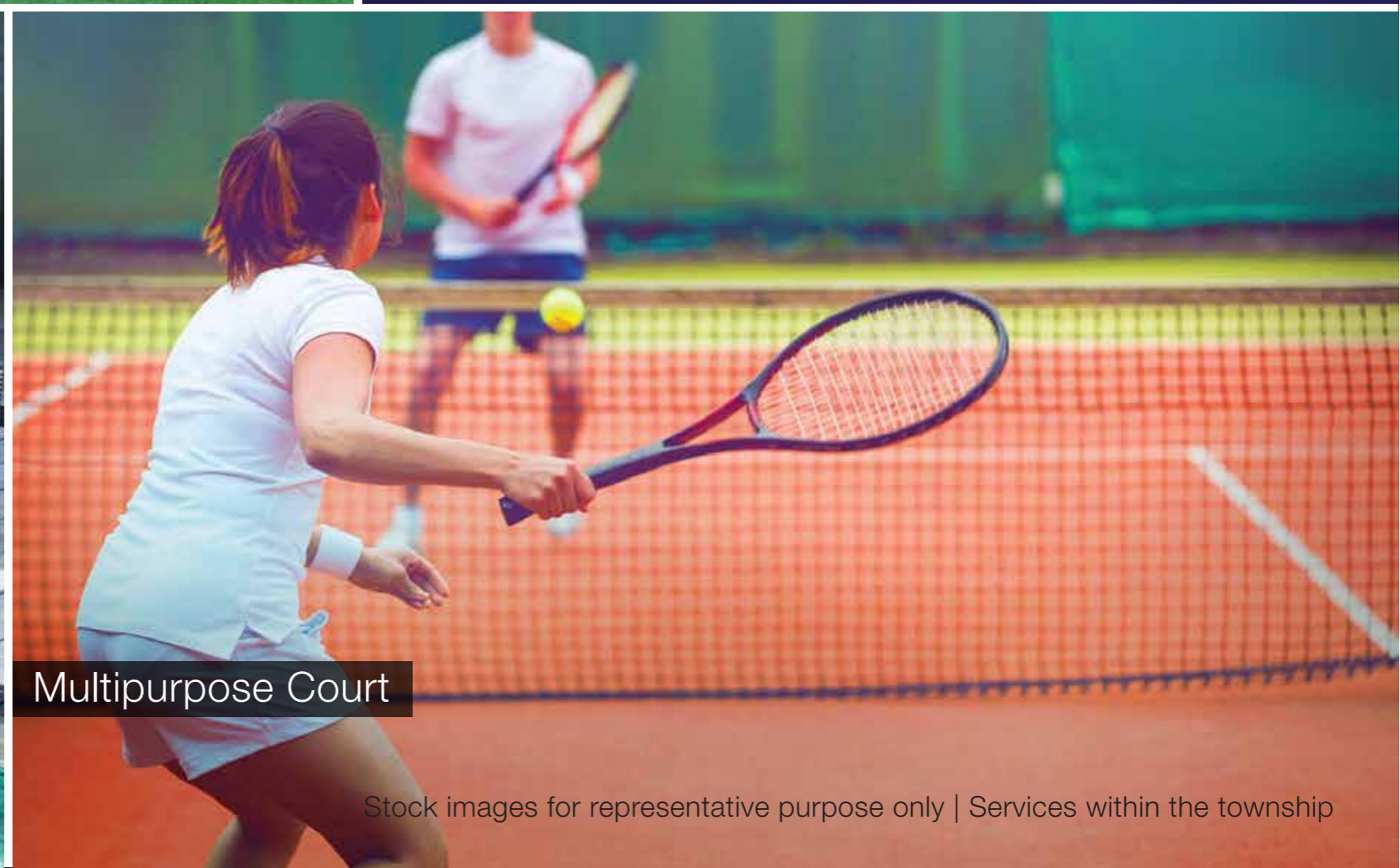
Pet Zone



Colour Garden with Koi Pond



Pool Deck with Hardscaping & Softscaping



Multipurpose Court

Artist's impression. Not an actual site photograph.

Stock images for representative purpose only | Services within the township



Exclusive Air Conditioned
Gymnasium & Fitness Arena



Exclusive Swimming Pool



Dedicated Walking Track

Artist's impression. Not an actual site photograph.



Pebbled Pathway/
Acupressure Pathway

Stock images for representative purpose only | Services within the township

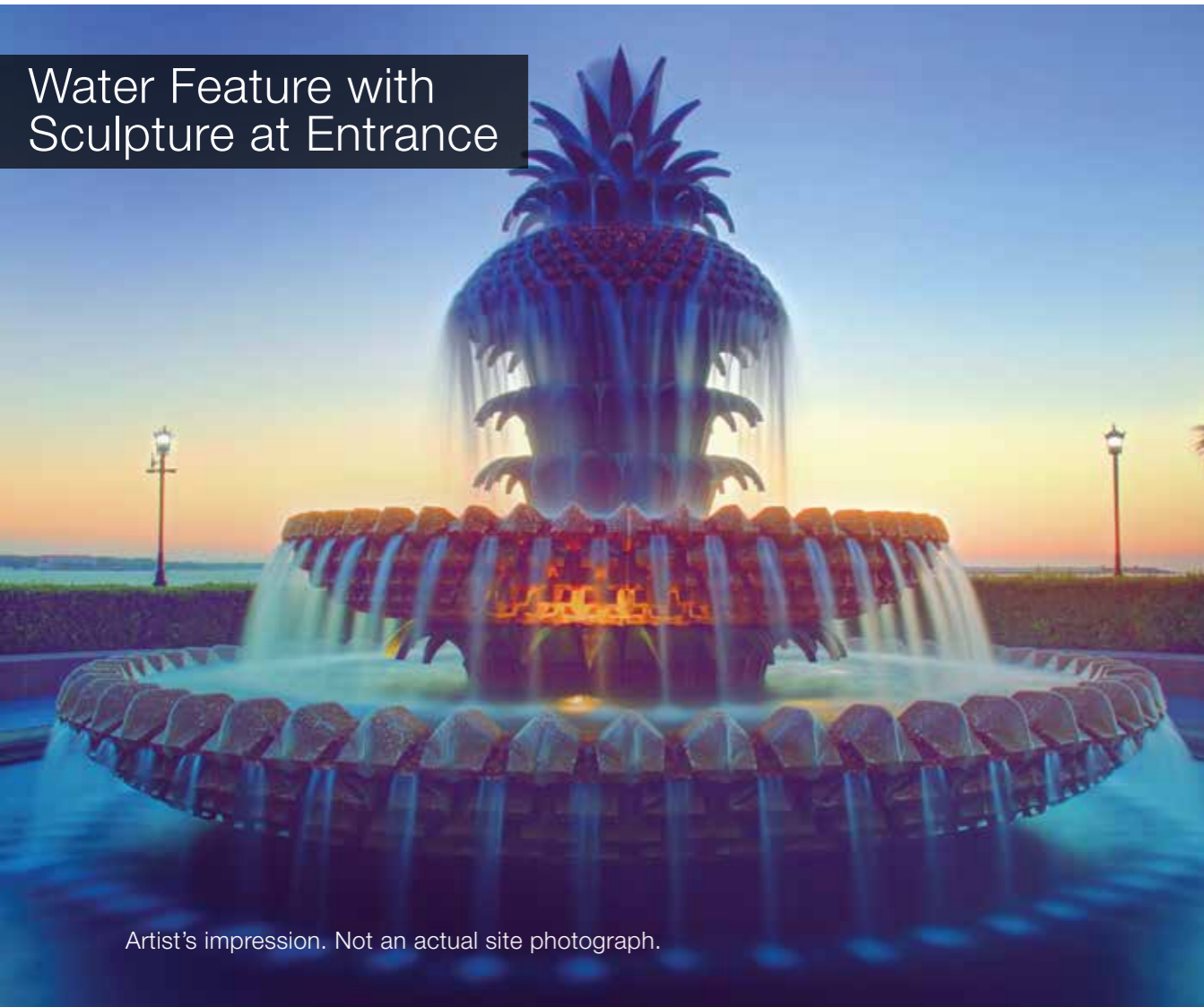
Yoga/Meditation Lawn



Dedicated Senior Citizen Alcove



Water Feature with Sculpture at Entrance



Fragrance Garden Pocket



Artist's impression. Not an actual site photograph.

Stock images for representative purpose only | Services within the township



GODREJ PARK AVENUE
GREATER NOIDA

LUXURY SPECIFICATIONS

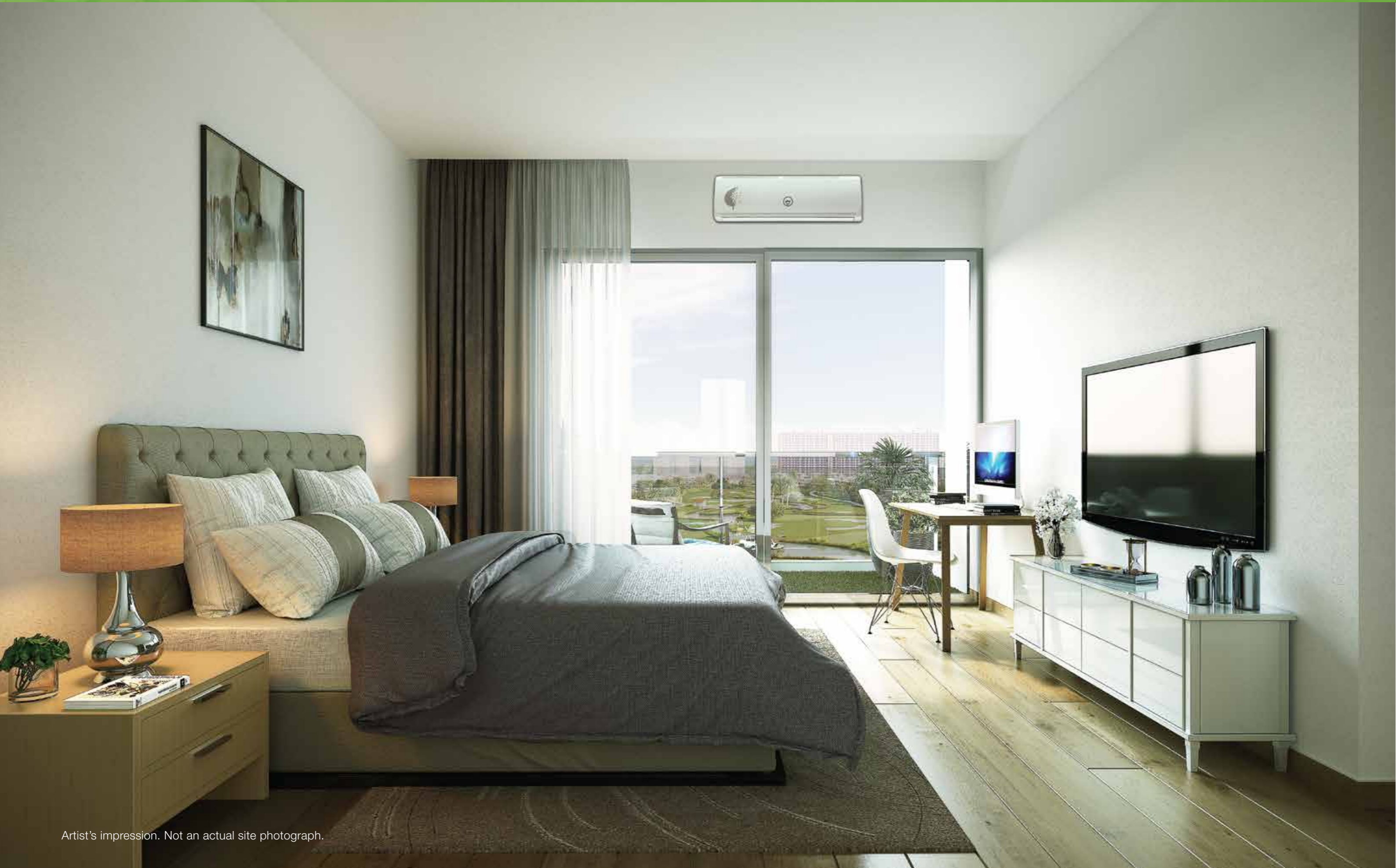


ITALIAN MARBLE FLOORING IN LIVING & DINING ROOMS





AIR-CONDITIONED RESIDENCES



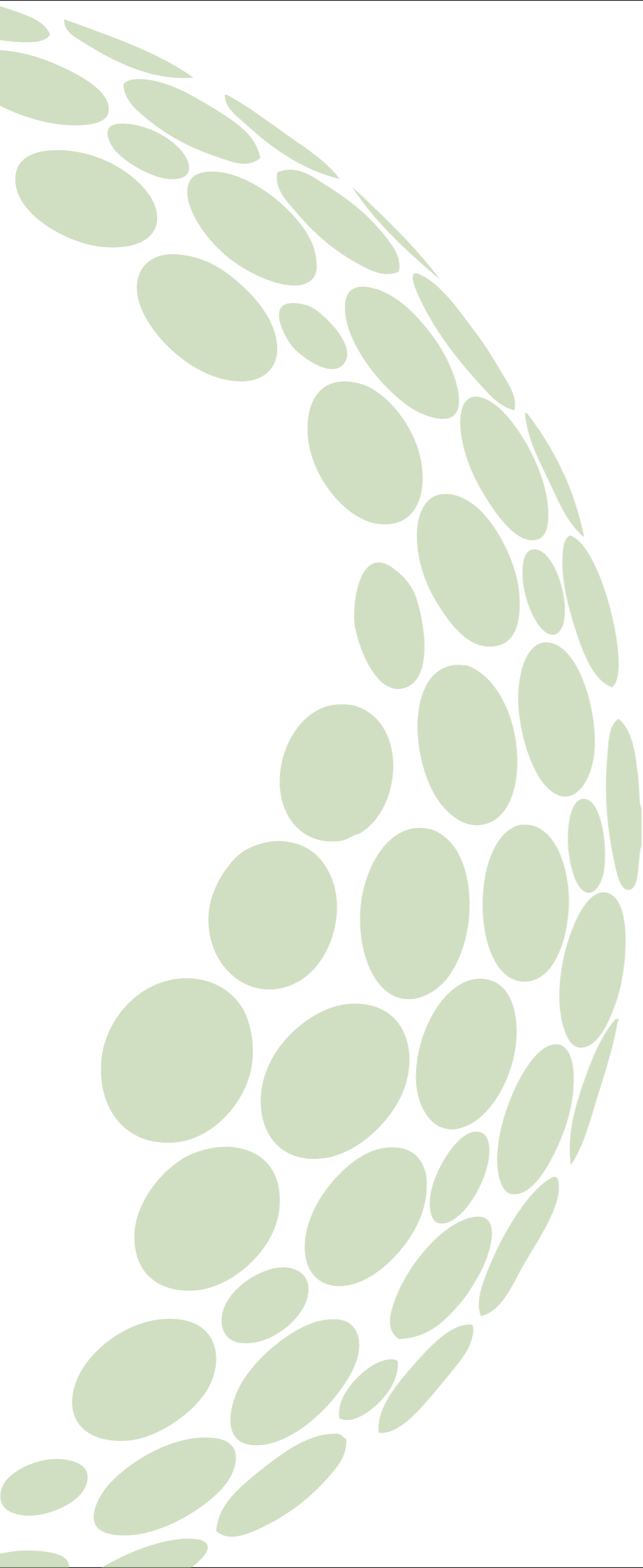
Artist's impression. Not an actual site photograph.



PREMIUM MODULAR KITCHEN WITH HOB & CHIMNEY



Artist's impression. Not an actual site photograph.



GODREJ PARK AVENUE
GREATER NOIDA

ULTRA LUXURY
SPECIFICATIONS



MODULAR KITCHEN AND FURNITURE BY **GODREJ INTERIO**

godrej interio®



VIDEO DOOR PHONE BY **GODREJ SECURITY SOLUTIONS**





KITCHEN APPLIANCES BY **BOSCH**



BOSCH

Invented for life



HOME THEATER BY **BOSE**

BOSE®



TELEVISIONS BY **SONY**

SONY



AIR CONDITIONERS BY **DAIKIN**





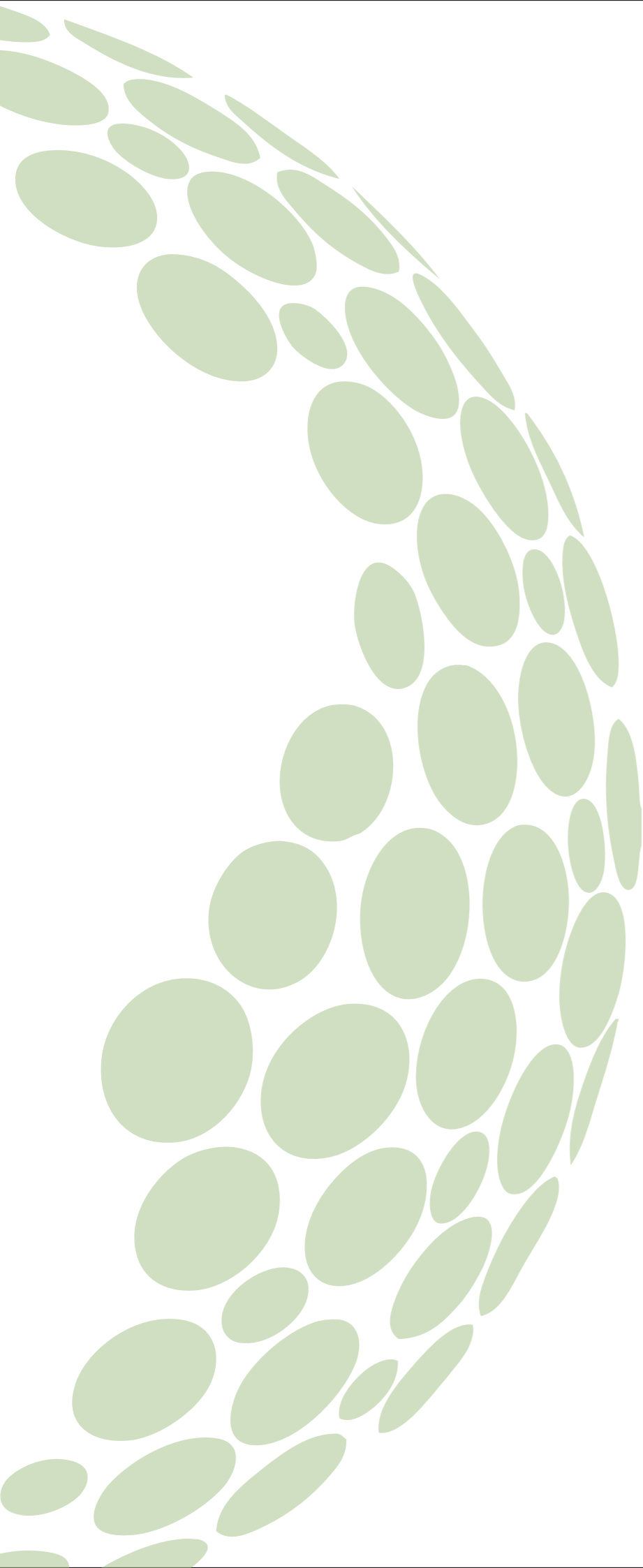
GODREJ PARK AVENUE
GREATER NOIDA

PALETTE OPTIONS



TWO PALETTES TO CHOOSE FROM

LUXURY PALETTE	ULTRA LUXURY PALETTE
Air conditioners in all room by Daikin (3 BHK - 5 ACs., 4 BHK - 6 ACs)	Air conditioners in all rooms by Daikin (3 BHK - 5 ACs., 4 BHK - 6 ACs.)
Video Door Phone	Video Door Phone
Wardrobe + Loft (2 doors) in Master Bedroom	Wardrobe + Loft (2 doors) in all bedrooms
Modular Kitchen including hob & Chimney	Modular Kitchen including hob & Chimney with branded built-in appliances i.e. Microwave, Dishwasher, Refrigerator & washing Machine
	Home Theatre by Bose
	Water Purifier by Kent
	Television by Sony in Living 132.8 cm X 74.7 cm (60") & Master Bedroom 88.6 cm X 49.8 cm (40")
	Beds & Mattresses - (King size in Master and Queen in others) with side tables
	Lights by Philips
	Locker in Master Bedroom wardrobe
	Geyser in all bathroom by Racold
	5 Seater Sofa Set + Central Table
	Wi-fi Camera in Living



GODREJ PARK AVENUE
GREATER NOIDA

PRODUCT DETAILS



CONFIGURATIONS

Configuration	Carpet Area (Sq.M.)	Exclusive Area (Sq.M.)	Total Area (Sq.M.)
3 BHK	97	18.60	115.60
3 BHK + Utility	103.70	20	123.70
4 BHK + Utility	126	20.60	146.60



PRICING

Configuration	Launch Price* in (Cr.)	Pre-Launch Price* (Ultra Luxury Palette)	Pre-Launch Price* (Luxury Palette)
3 BHK	1.25 - 1.35	1.24 - 1.27	1.14 - 1.17
3 BHK + Utility	1.35 - 1.45	1.35 - 1.44	1.24 - 1.33
4 BHK + Utility	1.60 - 1.75	1.58 - 1.73	1.45 - 1.60

*Govt. Taxes Extra

RTGS DETAILS

A/C Name	GODREJ GOLF LINK V
A/C No.	389005000243
Bank Name	ICICI Bank Ltd.
Branch	SCO-130, Huda Market, Sector - 46 Gurgaon - 122002
IFSC Code	ICIC0003890

*CHEQUE IN FAVOUR OF "GODREJ GOLF LINK V"

*SWIPE MACHINES AVAILABLE AT GODREJ GOLF LINKS, SALES GALLERY



10X10 EASY PAYMENT PLAN

Milestone	Amount
Advance Amount	Rs. 5 lacs
10% of COP - AA	Within 18 days from booking
10% of COP	Within 60 days from booking
10% of COP	Completion of PCC
10% of COP	Completion of GF slab
10% of COP	Completion of 4 th Floor Slab
10% of COP	Completion of Superstructure
10% of COP	Completion of Lift shaft work
10% of COP	Completion of flooring (without wooden flooring)
10% of COP	Completion of Painting works
10% of COP	On intimation of possession

ALLOTMENT DAY
9TH SEPTEMBER



PRIORITY GENERATION PROCESS

- ₹ 1 Lakh Online Payment / DD / Card Swipe & ₹ 4 Lakhs Current Dated Cheque
- Submission of application form
- KYC Documents

ADDITIONAL DISCOUNT OF ₹ 50,000 ON ONLINE PAYMENT

CHEQUE IN FAVOUR OF “GODREJ GOLF LINK V”

PREMIER ALLOTMENT WINDOW*
9TH SEPTEMBER

*Applicable only on payment of ₹ 5 Lacs

JOINT VENTURE PARTNER



Site Office Address: Godrej Golf Links, Plot No. REP 1, Sector - 27, Near Pari Chowk, Greater Noida.

RERA Registration No. for Park Avenue at Godrej Golf Links: UPRERAPRJ16697- www.up-rera.in

This is not an offer, an invitation to offer and/or commitment of any nature. This contains artistic impressions and no warranty is expressly or impliedly given that the completed development will comply in any degree with such artist's impression as depicted. The furniture, accessories, paintings, items, electronic goods, additional fittings/fixtures, decorative items, false ceiling including finishing materials, specifications, shades, sizes and colour of the tiles, etc. shown in the image are only indicative in nature and are only for the purpose of illustrating/indicating a conceived layout and do not form part of the standard specifications/amenities/services to be provided in the unit. All specifications of the unit shall be as per the final agreement between the Parties. In order to avoid any confusion, please note that the Project Godrej Park Avenue ("Project") is approved as "Cluster C" in the master layout plan for the Township. Further, Tower A, B, C & D shown in marketing plans are approved as "Tower B2, C1, C2, B2" respectively in approved building plan bearing number 3914/181 dated January 25, 2017 of the Project. The Project is being developed by AR Landcraft LLP. ("Developer"). The Developer has filed an application for correction of name of the Project with UP Rera Authorities. The Developer hereby declares that it has availed construction finance ("Facility") from ICICI Bank Limited ("Lender") and has secured the Facility by mortgaging the Township Land in favour of the Lender. RERA Registration No.: UPRERAPRJ16697- www.up-rera.in.

The official website of the company is <http://www.godrejproperties.com>. Please do not rely to any other information provided on any other website.